

# FP CC-400AE

Microscale Continuously Closed Cup Flash Point Tester



Accurate



High Efficiency



Convenient



Standard Presets



The FP CC-420AE is a professional instrument for assessing combustion hazards, developed using the continuous closed-cup method. It is designed for the petroleum, petrochemical, and chemical sectors to precisely measure the closed-cup flash point of various substances, including petroleum products, transformer oil, turbine oil, paints, perfumes, wood preservatives, essential oils, animal and vegetable oils, pesticide emulsifiers, high-viscosity materials, and plasticizers.

Hangzhou Zeal Instruments Science & Technology Co., Ltd.

marketing@zeal-instruments.com    www.zealinstruments.com  
No. 260, 6th Street, Hangzhou, Zhejiang Province, China



## Product Features

- Adopts an advanced continuous closed-cup flash point testing method for higher precision and efficiency.
- Small sample size, low testing cost, and low pollution.
- Continuous closed-cup operation without an open flame, ensuring high safety.
- Built-in refrigerating module with a wide flash point test range and short cooling time.
- Preset standard test method that can be correlated with other closed-cup methods.
- Fully automatic testing and automatic flash point calibration with atmospheric pressure.
- Real-time display of temperature and pressure curves for a more direct test process.
- The test result includes temperature-pressure rise curve to provide more flash point information.
- User hierarchical management, enabling control and management of different level accounts.
- 7-inch color touchscreen supporting Chinese input with direct and simple operations.

## Technical Specifications

Operating Environment	5°C – 40°C, ≤ 85% RH
Temperature Control Range	0 – 260 °C; -30 – 260 °C (low-temperature module); 0 – 420 °C (high-temperature module); -30 – 420 °C (both low-temperature and high-temperature modules)
Temperature Rise Speed	(2.5 ± 0.3) °C/min, (5.5 ± 0.5) °C/min, (0.5 – 12) °C/min customized
Temperature Measurement Accuracy	± 0.1 °C
Pressure Testing Range	0–200 kPa
Sample Size	1 mL or 2 mL
Ignition Mode	High-voltage electron ignition
Stirring Speed	50 – 300 rpm, adjustable
Data Storage Capacity	≥ 5,000 entries
Interface	RS232 *1, RJ45 *1, USB *2
Power Supply	AC 220 V, 50 Hz
Rated Power	300 W
Dimension	225 mm × 310 mm × 415 mm
Weight	13.5 kg

## Test Standards

SH/T 0768	SN/T 3077.1	DL/T 1354	ASTM D6450
SN/T 3077.2	ASTM D7094	GB/T 261	GB/T 21615
ASTM D93	GB/T 5208	GB/T 21790	ASTM D3828

## Application Fields



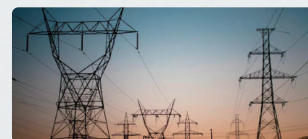
Petroleum



Flavors and Fragrances



Coatings



Electric Power

